

APPENDIX I
TASK 1 DELIVERABLES



WATER &
WASTEWATER
MUNICIPAL
INFRASTRUCTURE
LAND
DEVELOPMENT
AGRICULTURE
SERVICES
DAIRY SERVICES
LAND SURVEYING
& GIS
PLANNING &
ENVIRONMENTAL
DISTRICT
MANAGEMENT

FRESNO • CLOVIS • VISALIA • BAKERSFIELD • OAKDALE

286 West Cromwell Avenue
Fresno, CA 93711-6162
(559) 449-2700 • FAX (559) 449-2715
www.ppeng.com

MEMORANDUM

Subject: Upper Kings Basin DAC Study Kick off meeting minutes

Date: 01/11/2012

Possible Subgroups –

- Schools and surrounding communities, special districts, private wells
- County service areas
- Surface water systems (are any in Kings and along Delta Mendota canal?)
- DW/Stormwater/Flood/ww
- Geography – Alta, Lanare, Riverdale, City of Fresno area, CA aquaduct

Subregions Criteria/Considerations –

- Geographic equity – by county/ by number of DAC's
- Communities already have expressed interest in regional planning – also ID's (Fresno ID, Consolidated ID...)
- Community need
 - Not going to happen except through this project (no other money options)
 - Severity of problems
 - Health & safety – economic need
- At least one from each county – groups may cross county lines.
- Different types of water issues (flood control, dw, ww, etc.)
- Also larger water mgt districts that have expressed interest in helping DAC's
- Number of communities involved

Lon's Top 3 – Subregions

- Health and Safety Violations
 - Health and safety
 - Funding/Economic
- Communities that have expressed interest in participation
- Regionalization – Integrated planning/Interconnection and consolidation

Mapping

- Zoom in on Upper Kings
- Alta Irrigation
- Fresno Irrigation District
- Fresno Metro Flood Control District
- Delta-Mendota?

DAC Team Needs to Contact:

- CWC, SHE, Joe Prado (Fresno County), Gary S. (Fresno ID), Brock Buche (City of Fresno), Denise A. (County of Tulare), Sue Ruiz (Easton)

Assignments

- **Task 1** – Kings Basin IRWMP DAC workgroup –
 - Who is the group? – Lon call Eric
 - CWC does outreach
 - Lon/Eric – Identify members
 - (end of February meeting)
- IRWM – makes recommendation of subgroup – take to advisory group for discussion and approval
- Map, proposed subgroups and how we got there. (By end of January).
- RCAC 1st week February @ (New Mexico) example. 6th-10th – Lon, Dawn, John Dutton
- Orange Cove Irrigation District
- Alta Irrigation District
- Fresno Irrigation District
- Fresno Metro Flood Control
- Joe Prado – (important)
- Kings County? Flood/Stormwater
- Raymond Cook – water (Kings)
- Kevin McAllister – Public Works (Kings)

First Draft of Map

- “Communities” map
 - Columns – severity
 - To sort – interest

Memorandum
January 11, 2012
Page 3 of 3

- By – regionalization
- Add – Map for ID's & FMFCD map
- Schools and water systems
- Map w/boundary cities/DAC's and water/wastewater violations

TEAMING MEETING AGENDA
Upper Kings DAC Pilot Study Task 100
January 19, 2012

Review of Progress/New News:

Lon/Laural/Paul

Work Group Participants:

List

Assign members to contact

Chair Person

How many members...open?

Mapping:

Review current map

Discuss addition information

Coordination with Tulare

Sub-Regions:

Discuss regions developed so far

Ideas for additional regions

Define regions

RCAC Visit

What do we need to have ready?

MEMORANDUM

Subject: Upper Kings Basin DAC Study Team Meeting Minutes

Date: 01/19/2012

Conference Call – Maria, Gavin, Dawn, Abigail, Laurel, Lon and Paul

New News – RCAC confirmed February 6th, here the entire week. Maximize their time/Set up meetings with DAC's. Possible Cutler-Arros: area collaboration

New Meeting – With RCAC February 7th. 2:00 pm – P&P Visalia office

Review of Maps –

Add items

- Define DAC and SDAC in map legend
- Add Irrigation Districts
- Add statistics
 - By County/ % of DAC verses total communities
 - % of SDAC's by County

Sub-Region Discussion –

1. Health and Safety – Combine water and wastewater violation and create graphic on map that shows increasing severity/color dial (**Lon to work with Gavin**)
2. Consolidation/Regionalization – Interagency Agreements
 - a. All team members to provide Paul with all known consolidation possibilities. (**Paul to take lead**)
3. Private for profit systems/trailer parks/assisted living (**No action**)
4. Schools with water systems – Map schools with:
 - a. Water systems
 - b. Next to communities
 - c. Violations (**Gavin to take lead**)

MEMORANDUM

Subject: Upper Kings Basin DAC Study Team Meeting Minutes

Date: 01/27/2012

1. Geographic Sub-regions (Focus Areas) –

- Agencies with water and wastewater systems
- Consolidation
- Agencies without water and wastewater systems
- Transient non-communities
- State small systems

2. Located DAC's near cities (Consolidation opportunities)

3. Isolated health and safety communities

- Potential sub-region

➤ Gavin to develop a list of DAC's in each sub region

4. Potential Sub-region – Schools

5. Potential Sub-region – Flood control/storm water. County and Irrigation districts

February 6th Meeting –

- List of all those communities in each sub region
- State smalls (County should have record of these) – five to fifteen connections
- No systems
- No community water systems

By February 6th –

- Have identified
- Have definitions
- Have subregions
- Have list of cities

➤ List some common problems – Arsenic, nitrate, etc.

➤ Have Gavin print spreadsheet for each subregion

Who should be in the workgroup?

- Who is already interested?
- The group can grow
- Laurel has a list – Have Eric Osterling create an email and then follow up with phone calls.
- The week of February 20th – 1st DAC workgroup
- February 21st (anytime during the day) and 22nd (anytime in the afternoon) – for first workgroup meeting (in Fresno – at Kings River Conservation District)

Reserve on calendar

- Upper Kings Advisory is March 21st

Group Consensus on –

- Draft Sub-regions
 1. Northern Tulare County – Alta Region
 2. City Fresno/Malaga/Easton and Surrounding Area
 3. Isolated Health and Safety – Private/Trailer Parks/Assisted Living
 4. Flood Control/Storm water
 5. S.W. Fresno County – Lanare/Riverdale

Schools will be included in all sub-regions



WATER & WASTEWATER
MUNICIPAL
INFRASTRUCTURE
LAND DEVELOPMENT
AGRICULTURE SERVICES
DAIRY SERVICES
LAND SURVEYING & GIS
PLANNING &
ENVIRONMENTAL
DISTRICT MANAGEMENT

FRESNO • CLOVIS • VISALIA • BAKERSFIELD • OAKDALE

286 West Cromwell Avenue
Fresno, CA 93711-6162
(559) 449-2700 • FAX (559) 449-2715
www.ppeng.com

MEMORANDUM

Subject: Upper Kings Basin DAC Study Team Meeting Minutes

Date: 2/22/2012

1. Introductions (Laurel Firestone)

- Approximately 20 people in attendance (see attached sign-in sheet)

2. Project Introduction (Lon Martin)

- Project is grant-funded - 50,000 total funding
 - \$20,000 (Administration)
 - \$80,000 (Data-gathering and Outreach)
- Inventory of DACs within Upper Kings including:
 - Infrastructure needs
 - Financial needs
- The project will be primarily concerned with facilitating involvement of the DACs in regional planning efforts
- DAC is defined as a community with a median household income of less than 80% of the state median household income
- SDAC is defined as a community with a median household income of less than 60% of the state median household income
- The median household income (MHI) of a community can be found
 - Census data if the community is large enough to be considered a Census designated area
 - In many communities income surveys are the most reliable (and often only) mean of determining the MHI
 - For the MHI to be considered valid from income surveys, a minimum of 75% of household must contribute information
 - Most recent comprehensive Census data is from 2000; however many areas have 2005-2009 data available other sources.
- By the DAC and SDAC definitions given, nearly all communities in the region are considered DACs, even Fresno and portions of Clovis
- Upper Kings DAC map is developed in large part from the data used in the Tulare Lake Basin study (John Dutton, Provost & Pritchard)

3. Goals & Roles (Laurel Firestone)

- The Grant is design to develop a model on how IRWMPs can really help DAC; the goal is to develop a template/process to be implemented by other IRWMPs to help DACs in other areas
- Three Main Project Goals:
 - Define Sub-regions (5 are cited in the grant application)
 - Focus outreach and data gathering efforts
 - Facilitate regional planning using the data gathered and sub-regions defined
- Workgroup Goals (this meeting):
 - Review and discuss the sub-regions the consultants have begun developing
 - Gather information on contacts with the communities in the sub-regions

4. Sub-Region Development Process

- No exclusions are intended – we want to keep the communication open with as many communities as possible; this is why the boundaries are dashed
- Initially the sub-region development was focused on water supply and quality issues primarily
- Now the sub-regions are focused on geography also

5. Open Discussion / Q&A

- Q: Is there a way to quantify/qualify the minimum size/demographic to delineate a community as “sustainable” (ie economy of scale)
A: The variables in that question are too great to have a universal answer.
For example:
 - Does the system require treatment?
 - What is an acceptable monthly cost per house for water? This will depend largely on how disadvantaged the community is
 - What are the geopolitical considerations?
- We are not looking at sub-regions specifically or exclusively for consolidation; planning efforts are also viable ‘project’
- Q: Should we be looking into including areas that are not in the IRWMP but are proximal to our sub-regions and share water issues?
- A: Yes we can, we just need to be sure to avoid overlapping with the Tulare Lake Basin study
- Q: Can we add a color for incorporated cities that are also DACs?

A: Yes, but that would include nearly all of the cities or portions of them. But we will make that change to delineate Fresno (and others) as an 'Incorporated DAC'

- Once the sub-regions are determined, the consultants will meet with the sub-region entities to make sure the divisions make sense from the 'ground-level'

6. Comments/Questions on Sub-Region Map

- Possibly make the Southwest Fresno region larger; include Home Garden?
- Isolate Health & Safety region too large; should be split in half – divide by Hwy 41
- In large regions, where will the meetings be held to encourage the most attendance?
- Idea to have 'focus areas' within subregions; if DACs are not interested in participating, they will not and the 'focus areas' may reorganize themselves or dissolve altogether.
- Incentive for participating in the DAC regionalization efforts will have to be different based on what type of community is being approached; for example small, privately owned wells versus small water district
- Is there enough budget to complete all of the outreach for all of the sub-regions currently proposed?
- Expand sub-region boundaries to be all inclusive of the entire IRWMP region
- Show Irrigation District boundaries overlaid
- Remove overall Flood/Stormwater sub-region
- Note: Fairmont is currently looking into consolidation with CSA10 in Fresno County
- Change the title of "Fresno and Surrounding Areas" to "Fresno-Clovis and Surrounding Areas"

7. Final Boundaries for Sub-Regions

- Northern Tulare County (unchanged)
- West Fresno County (created)
- East Fresno County (created)
- Kings County (expanded and renamed from Southwest Fresno County)
- Fresno-Clovis and Surrounding Areas
- Boundaries will be coterminous to avoid missing any communities or water systems

8. Next Meeting

- IRWMP Advisory Meeting on 3/21/12 (9:30-11:30) at Fresno Farm Bureau

**Upper Kings Basin IRWM Authority
DAC Workgroup Meeting**

**Kings River Conservation District Board Room
4886 East Jensen Avenue, Fresno, CA
February 22, 2012 2:30 – 4:30pm**

AGENDA

2:30- 2:40 - Welcome and Introductions

Upper Kings DAC Pilot Project Team

1. Provost and Pritchard: Lon Martin
2. Community Water Coalition: Laurel Firestone
3. Self-Help Enterprises: Paul Boyer

2:40- 2:50 – Introduction to the project

The Kings Basin IRWM Authority has received a grant from the State of California Department of Water Resources for a pilot project focused on the water, wastewater and storm water related problems of Disadvantaged Communities within the Kings Basin IRWM.

2:50-3:00 – Goals of the meeting and role of this group (Upper Kings Basin IRWMP DAC Workgroup)

Goal of the DAC Workgroup is to review, discuss and provide feedback on the proposed sub-region groups of DAC communities. These sub-region groups will be used to group water, wastewater and storm water deficiencies and:

1. Identify solutions for deficiencies
2. Solutions will be formulated with the focus being integrated regional planning.
3. Facilitate partnerships with DACs and other IRWMP members and interested parties.

3:00- 3:10 - Process used to develop subgroups

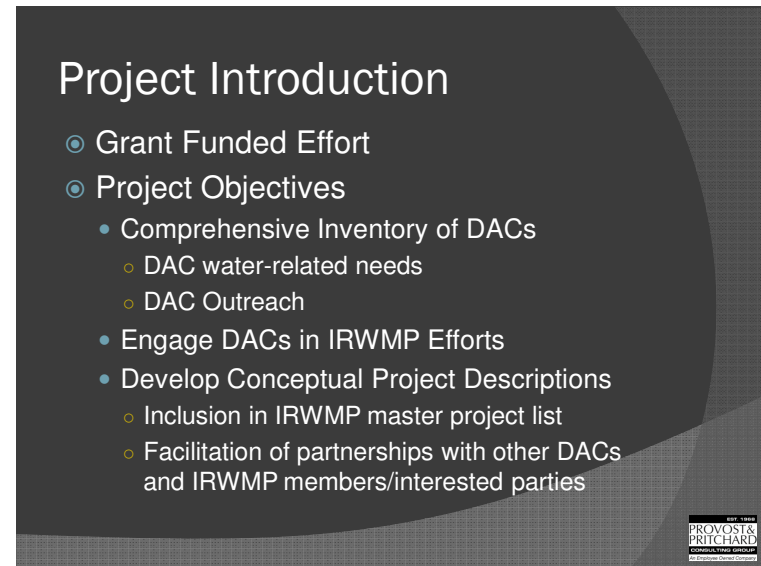
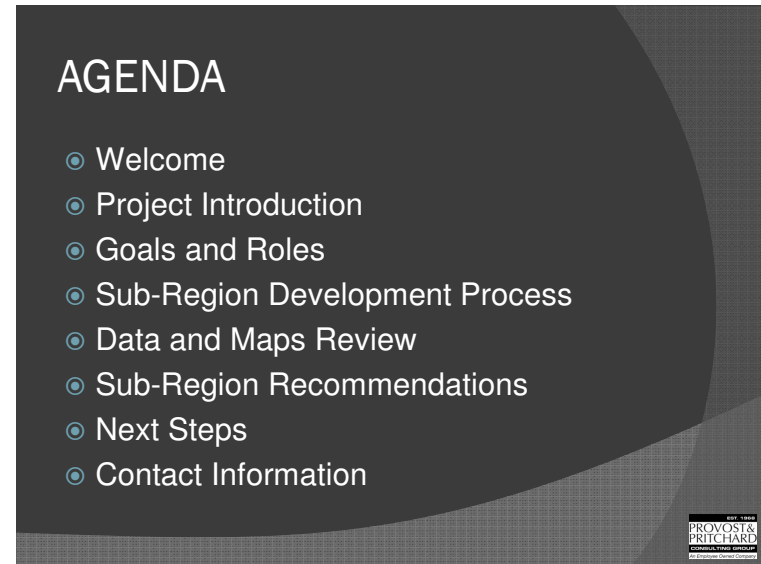
3:10- 3:30 - Review of data and maps

Review of the data and maps and work that has been done so far to develop sub-region recommendations

3:30- 4:15 - Discussion of the Sub Regions/Subgroup recommendations

1. Northern Tulare County
2. Southwest Fresno County
3. Isolated Health and Safety
4. Flood Control/ Storm Water
5. City of Fresno and surrounding areas

4:15- 4:30 - Final thoughts and next steps

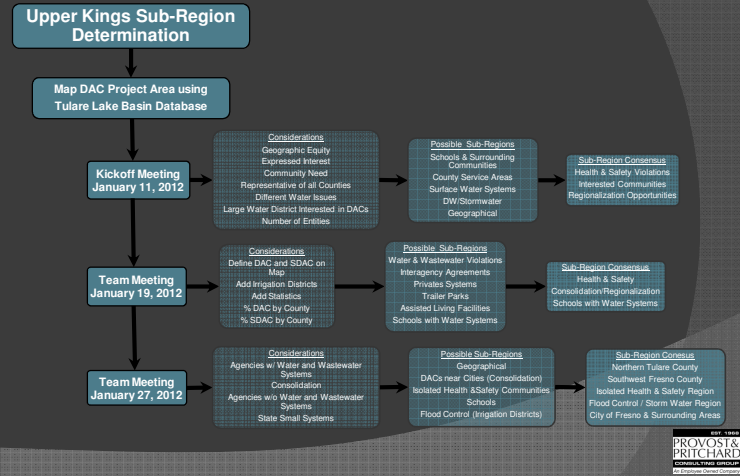


Goals & Roles

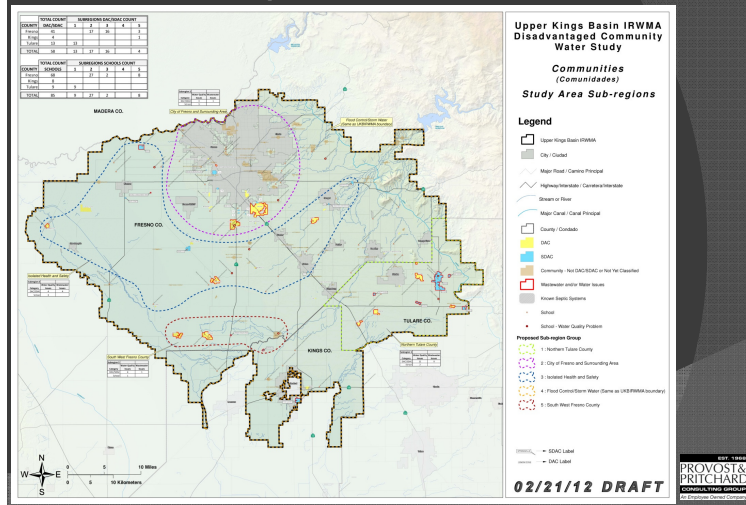
- DAC Workgroup Goals
 - Review Proposed DAC Sub-Regions
 - Sub-Region Purposes
 - Identify Solutions to Deficiencies
 - Integrated Regional Planning
 - Facilitate Partnerships



Sub-Region Development Process



Data & Maps Review



Sub-Region Recommendations

- Northern Tulare County
- Southwest Fresno County
- Isolate Health & Safety Region
- Flood Control/Storm Water Region
- City of Fresno & Surrounding Areas



Next Steps

- Present Sub-Region recommendations to Upper Kings Basin IRWM Authority Advisory meeting



Contact Information

- Lon Martin
559.449.2700
lmartin@ppeng.com
- Laurel Firestone
559.733.0219
laurel.firestone@communitywatercenter.org
- Paul Boyer
559.802.1681
paulb@selfhelpenterprises.org



Upper Kings Sub-Region Determination

Map DAC Project Area using
Tulare Lake Basin Database

Kickoff Meeting
January 11, 2012

Considerations
Geographic Equity
Expressed Interest
Community Need
Representative of all Counties
Different Water Issues
Large Water District Interested in DACs
Number of Entities

Possible Subregions
Schools & Surrounding
Communities
County Service Areas
Surface Water Systems
DW/Stormwater
Geographical

Sub-Region Consensus
Health & Safety Violations
Interested Communities
Regionalization Opportunities

Team Meeting
January 19, 2012

Considerations
Define DAC and SDAC on Map
Add Irrigation Districts
Add Statistics
% DAC by County
% SDAC by County

Possible Subregions
Water & Wastewater Violations
Interagency Agreements
Privates Systems
Trailer Parks
Assisted Living Facilities
Schools with Water Systems

Sub-Region Consensus
Health & Safety
Consolidation/Regionalization
Schools with Water Systems

Team Meeting
January 27, 2012

Considerations
Agencies w/ Water and Wastewater Systems
Consolidation
Agencies w/o Water and Wastewater
Systems
State Small Systems

Possible Subregions
Geographical
DACs near Cities (Consolidation)
Isolated Health & Safety Communities
Schools
Flood Control (Irrigation Districts)

Sub-Region Conesus
Northern Tulare County
Southwest Fresno County
Isolated Health & Safety Region
Flood Control / Storm Water Region
City of Fresno & Surrounding Areas

Upper Kings Basin IRWMA
Disadvantaged Community Water Study
Study Area Sub-Regions

COUNTY	TOTAL COUNT DAC/SDAC	SUBREGION DAC/SDAC COUNT				
		1	2	3	4	5
Fresno	36		17	16		3
Kings	4					1
Tulare	13	13				
TOTAL	53	13	17	16		4

COUNTY	TOTAL COUNT SCHOOLS	SUBREGION SCHOOLS COUNT				
		1	2	3	4	5
Fresno	68		27	2		8
Kings	8					
Tulare	9	9				
TOTAL	85	9	27	2		8

Subregion 1: North Tulare County		
Category	Water Quality Issues	Wastewater Issues
DAC/SDAC	11	9
School	2	

Subregion 2: City of Fresno and Surrounding Areas		
Category	Water Quality Issues	Wastewater Issues
DAC/SDAC	3	1
School	3	

Subregion 3: Isolated Health and Safety		
Category	Water Quality Issues	Wastewater Issues
DAC/SDAC	4	4
School	3	

Subregion 5: Southwest Fresno County		
Category	Water Quality Issues	Wastewater Issues
DAC/SDAC	4	1
School	1	

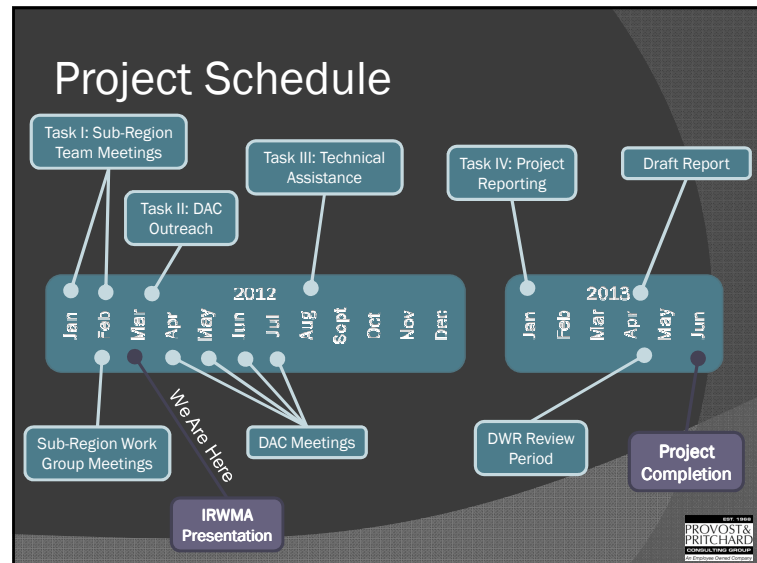


Purpose

- The DAC Pilot Project will assist DWR in developing methods to improve DAC participation throughout the State, as well as, develop methods to improve DAC participation in the Upper Kings Basin IRWM plan.
- Develop a comprehensive inventory of all DACs and their water related needs as well as integrate their contact info into the IRWMP mailing lists
- Engage and integrate DACs into the IRWMP
- Develop conceptual project descriptions and cost estimates to include in the IRWMP master project list and facilitate partnerships between DACs and IRWMP members

Scope of Work

- DAC SubRegion Groups Determination
 - 1 – 2 Months
- DAC Data Gathering & Outreach
 - 3 – 5 Months
- Facilitate Sub-Group Planning & Technical Assistance
 - 3 – 5 Months
- Project Reporting
 - Ongoing – Complete by Month 18
- Grant Administration Support



Project Coordination

- Tulare Lake Basin Project (TLB)
 - Sharing of Data
 - Pilot Project Selection Coordination
- Upper Kings Project unique features:
 - Organizational Consolidation
 - Stormwater Impacts Included
- Utilize Existing Reports
 - *Addressing Nitrate in California's Drinking Water*
Thomas Harter and Jay R Lund, UC Davis
 - *Communities That Rely on Contaminated Groundwater*
State Water Resources Control Board

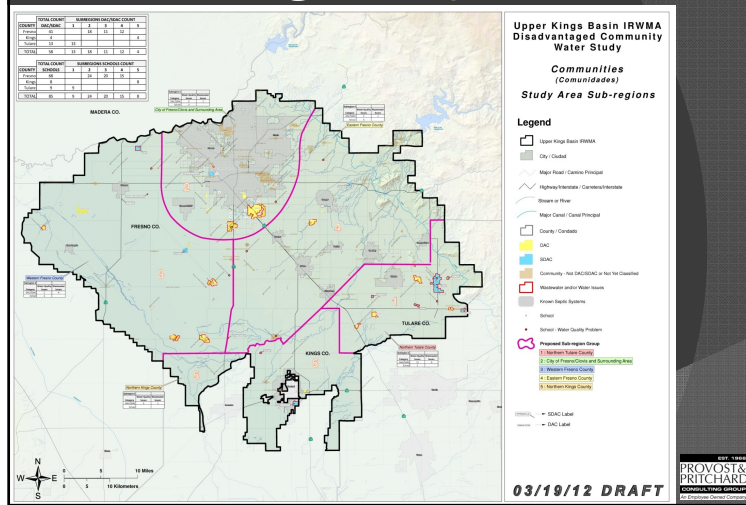


Work Completed to Date

- 1/11/12 Kickoff Meeting
- 1/19/12 Team Meeting
- 1/27/12 Team Meeting
- 2/23/12 DAC Workgroup Meeting
 - Refined Sub-Region Map; Sub-Region Consensus:
 - Area 1 Northern Tulare County
 - Area 2 Fresno / Clovis & Surrounding Areas
 - Area 3 Western Fresno County
 - Area 4 Eastern Fresno County
 - Area 5 Northern Kings County



DAC Sub-Region Map



Next Steps

- Refine definition of DAC
- Evaluate Incorporated Areas based on census tract for participation as a DAC
- Workgroup meeting to review DAC definition and map update
- Begin Task II: DAC Data Gathering and Outreach



Contact Information

- Lon Martin
559.449.2700
lmartin@ppeng.com
- Laurel Firestone
559.733.0219
laurel.firestone@communitywatercenter.org
- Paul Boyer
559.802.1681
paulb@selfhelpenterprises.org



