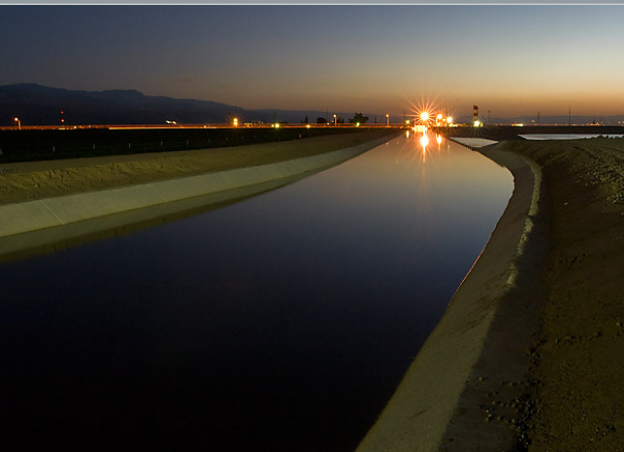


# IRWMP Update Workgroup Meeting #5



3:00 p.m. • May 22, 2018  
Kings River Conservation District Office

# Agenda

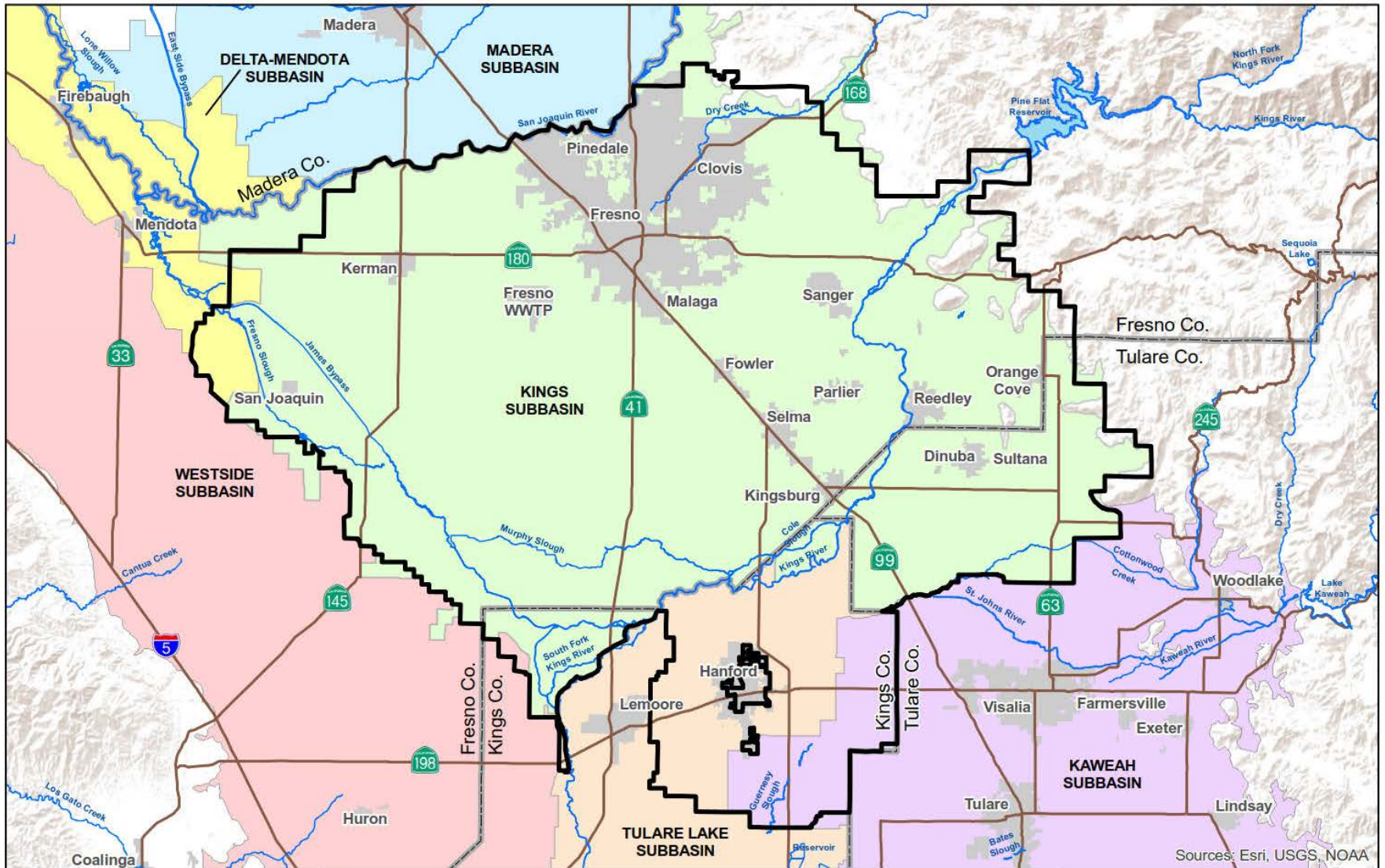
- IRWMP Update Status
  - Draft IRWMP
  - Review Schedule
  - Implementation Grant Update
- Storm Water Resources Plan
  - Outreach
  - Projects
  - Construction Grant Update
- Schedule Next Meeting

# Scope of Grant Work Reminder

- IRWMP Update
  - Current IRWMP adopted in 2012
  - Address specific water quality concerns
  - Update IRWMP to address 2016 Guidelines
- Separate Stormwater Resources Plan (SWRP)
  - State Water Board program
  - Projects included in SWRP eligible for funding

# Draft IRWMP

- Overview of Draft IRWMP Changes
  - Water Quality Change Requirements
  - Project Information Form Changes Needed
  - SGMA and IRWM
  - Overlapping IRWMP Boundaries



Sources: Esri, USGS, NOAA



0 3 6  
Miles

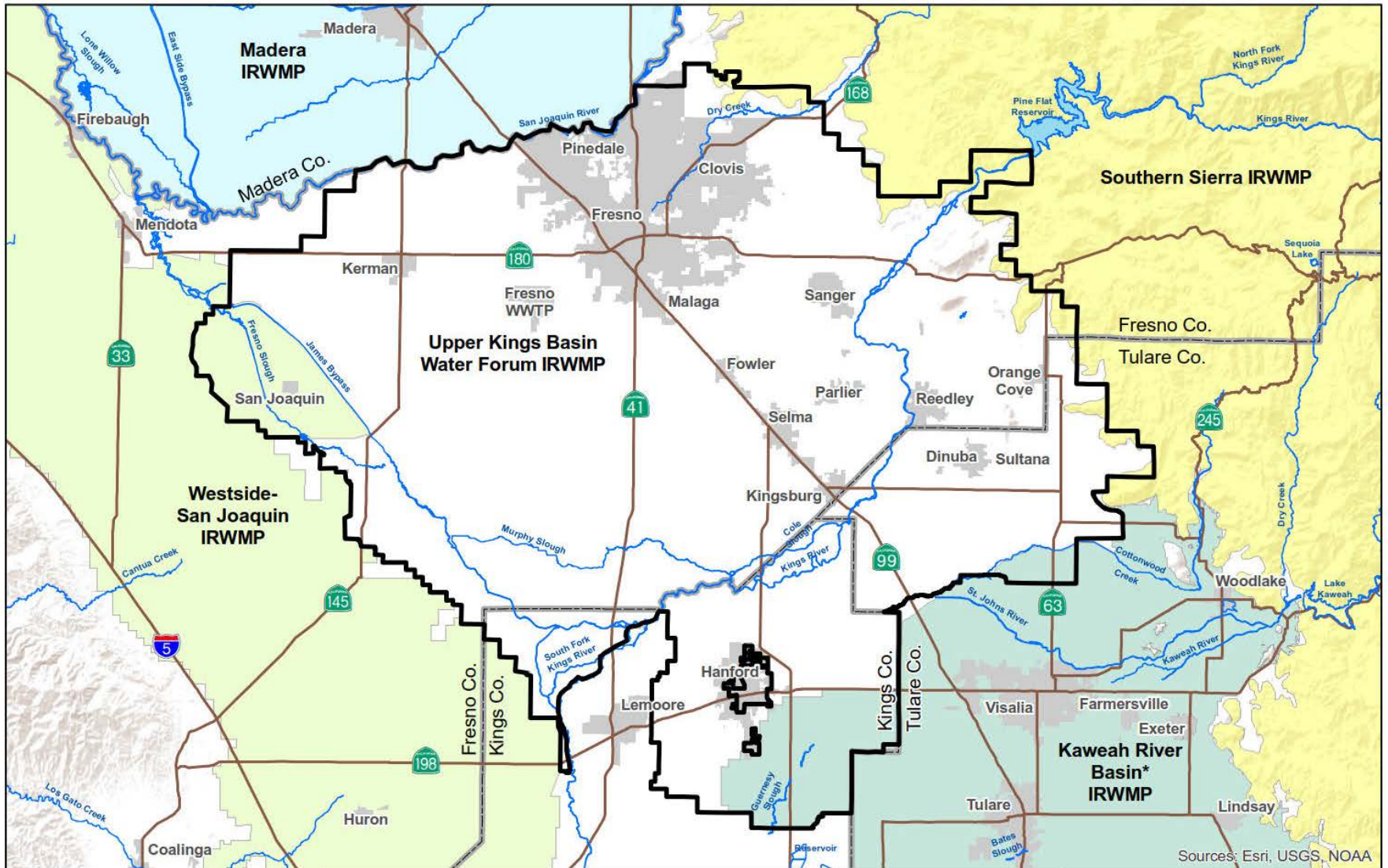
N



|   |   |  |  |   |   |  |   |
|---|---|--|--|---|---|--|---|
| <ul style="list-style-type: none"> <li> Upper Kings Basin IRWMP</li> <li> City</li> <li> County</li> </ul> | <p><b>CA DWR Bulletin 118 Subbasin (2017)</b></p> <table border="0"> <tr> <td> Madera</td> <td> Kaweah</td> </tr> <tr> <td> Delta-Mendota</td> <td> Tulare Lake</td> </tr> <tr> <td> Westside</td> <td> Kings</td> </tr> </table> |  Madera |  Kaweah |  Delta-Mendota |  Tulare Lake |  Westside |  Kings |
|  Madera  |  Kaweah  |  |  |   |   |  |   |
|  Delta-Mendota   |  Tulare Lake   |  |  |   |   |  |   |
|  Westside  |  Kings   |  |  |   |   |  |   |

**FIGURE 3-1**  
Upper Kings Basin IRWMP  
Groundwater Subbasin Boundaries





Sources: Esri, USGS, NOAA




|   |  |
|---|--|
|  Upper Kings Basin IRWMP |  Kaweah River Basin IRWMP   |
|  City                    |  Madera IRWMP               |
|  County                  |  Southern Sierra IRWMP      |
|   |  Westside-San Joaquin IRWMP |

**FIGURE 3-5**  
Upper Kings Basin IRWMP  
Neighboring IRWMPs

# Draft IRWMP Review Schedule

- Proposed Schedule for Review of Workgroup Draft
  - June 8 – Workgroup Comments due
  - By June 15 – Workgroup Meeting
  - By June 22 – Send Draft to DWR for Review
  - July/Aug – Review/Receive/Address DWR Comments
  - Aug – Workgroup Mtg to finalize Draft IRWMP
  - Mid Aug – Notice and send out Public Draft IRWMP
  - Oct – Adopt IRWMP at Board Meeting

# IRWMP Pending Grant Cycle

- \$34M remaining for Tulare/Kern Region
- Notes from Roundtable of Regions Mtg with DWR



# Storm Water Resource Plan Reminders

- Separate Plan from IRWMP
  - FMFCD has functional equivalent plan
  - SWRP will cover all of KBWA outside of FMFCD
- Will use IRWMP project list tracking and process
  - List of **prioritized projects** is required
- Upcoming Funding will have \$86M available
  - Draft grant guidelines in early 2019
- **Projects must be included in SWRP**

# Storm Water Resource Plan Updates

- Sections 1-5 drafted
- Checklist (roadmap) identifying where each requirement is addressed in SWRP
- Concern about lack of projects
  - Self-Help assisting with Outreach
  - Meetings scheduled with Fresno/Tulare County to identify projects